

Sheremetyevo Airport, Terminal - 3, Moscow, Russia



Client
OAO "Terminal"

Value
Approx \$ 1 billion

Total Site Area
67 Ha

Completion
2009

Construction Period
52 months

Service
Project Management/Construction Management/Zakazchik

Architect/Design
ADPI (General Designer)
D. Pshenichnikov (Architect)
ENMAR (Overall Working Design)

Sector
Aviation

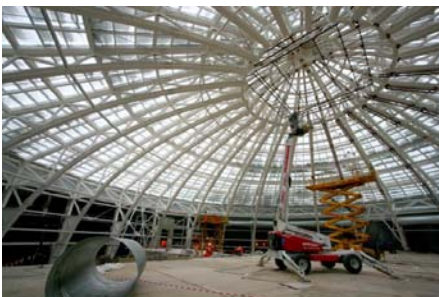


The new Sheremetyevo-3 Terminal including new apron and engineering infrastructure will have an expected capacity of 12 million passengers per year and will include:

- a new terminal building with total area of 170 000 m²;
- a new apron with total area of approximately 350 000 m²;
- a multi-storey car park for 3,400 cars;
- the engineering infrastructure network with separate water treatment and electrical distribution centre facilities;
- road/ flyover network connecting the new terminal with other terminals of Sheremetyevo Airport and Mezhdunarodnoe Shosse.

The selection of the General Contractor was carried out by international tender and was managed by Bovis Lend Lease. Very strict procedures were imposed on the tender arrangements including an independent audit to confirm that the Tender organised and managed by BLL was undertaken in a proper and independent manner in full compliance with International and Russian regulations.

The appointed General Contractor, ENKA, was responsible for preparing working drawing documentation and included the appointment of various specialist design companies.



The General Design Concept for the new Terminal Building was developed by the well-known specialist airport Design company ADPI, and the superstructure design was prepared by Russian Architect Mr. D. Pshenichnikov.

Bovis Lend Lease is delivering full project and construction management services. Our initial involvement began with the selection of a General Designer and was followed by the management of the General Contractor and Specialist Subcontractors while at the same time performing the functions of *Technical Zakazchik* and Design Manager and finally preparing the project for State Commissioning.